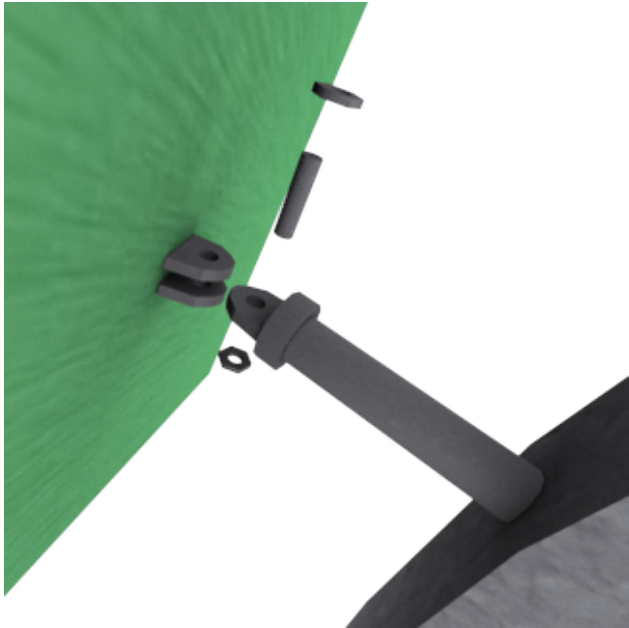
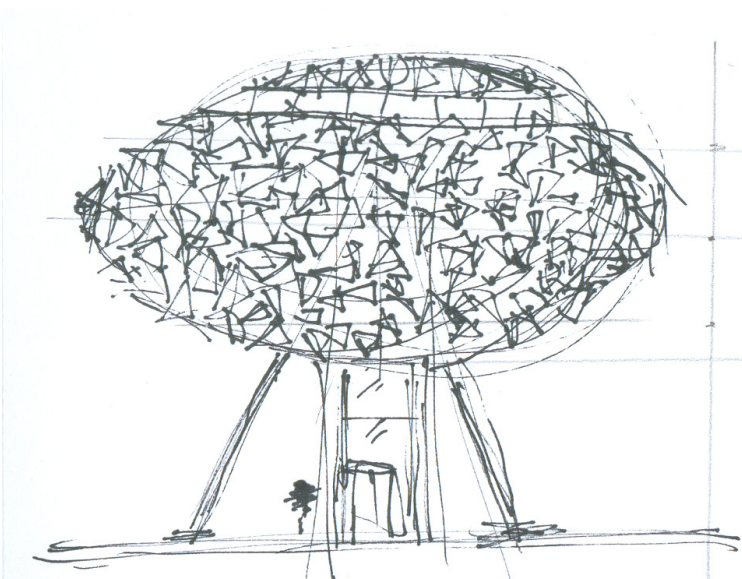
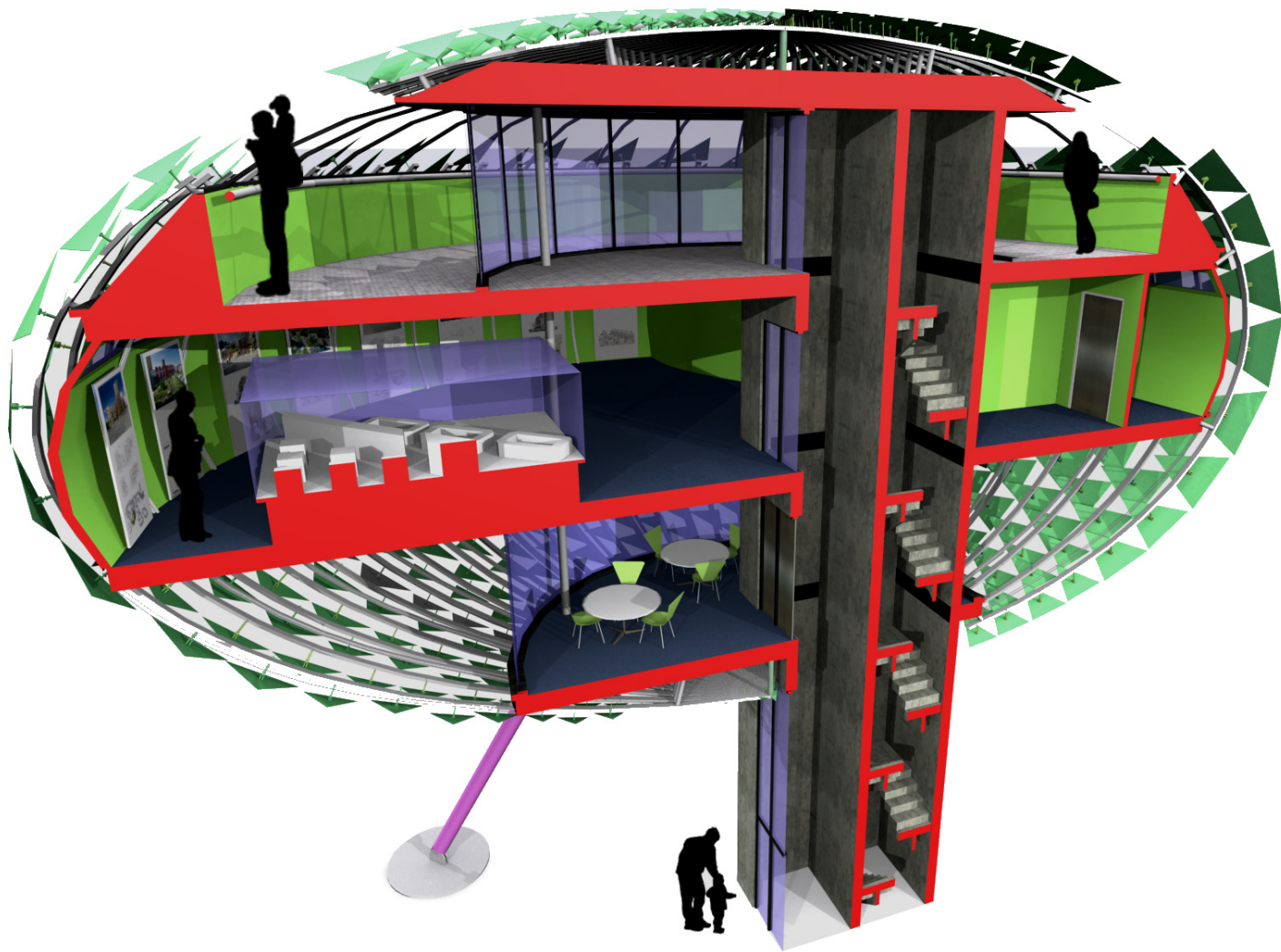


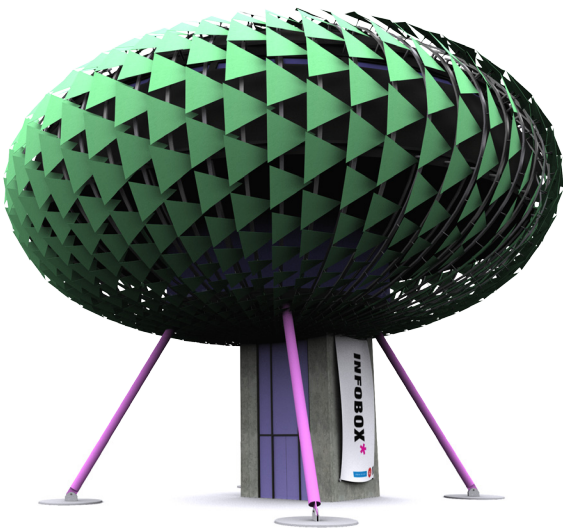
Response: I have responded to the brief by raising the building 6 metres above the street, this allows maximum pedestrian moment about the building. A lift will beam people up into the building, which is divided up into three floors, the first floor is the private consultation room, only accessible to the public accompanied by staff, the room will have full high glazing, allowing views out through the cladding system.

The second floor is the sales floor, 18 metres in diameter, with high windows to allow maximum wall space. There are also back of house rooms such as WC's, staff room and a store room. The third floor is the viewing deck, allowing 360 degrees of visibility, over the development as well as viewing back towards the Anglican Cathedral.

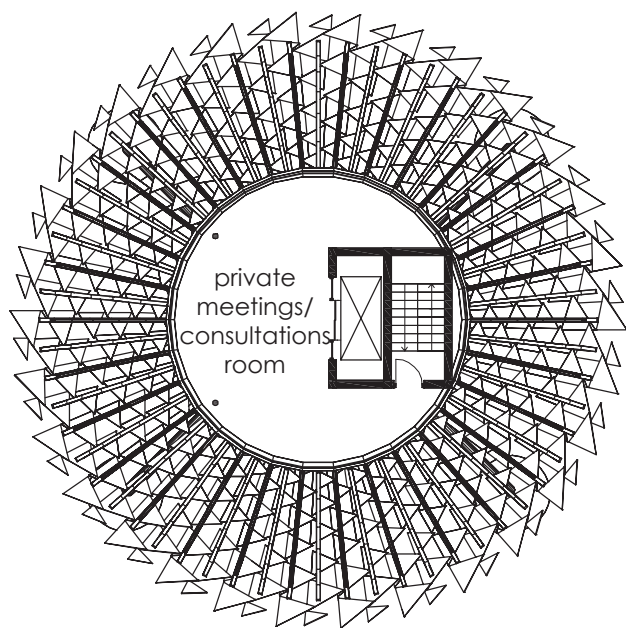
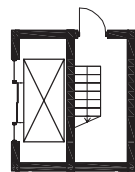
The form of the building is a squashed sphere 10 metres high and 18 metres in diameter on 6 metre stilts, using a steel structure supported by a concrete lift core. The building will be clad in coloured aluminium triangles.



The concept of the facade is to give form to the building while allowing views and light in. Inspired by organic forms from nature it is create by a repeating pattern of triangles varying in size. The facade also gives protection from any missiles throw at the building.

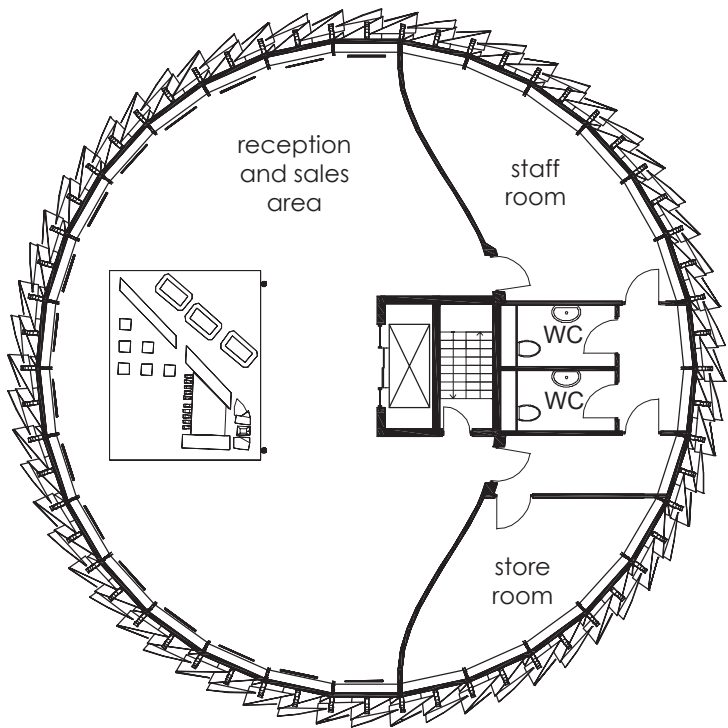


Section

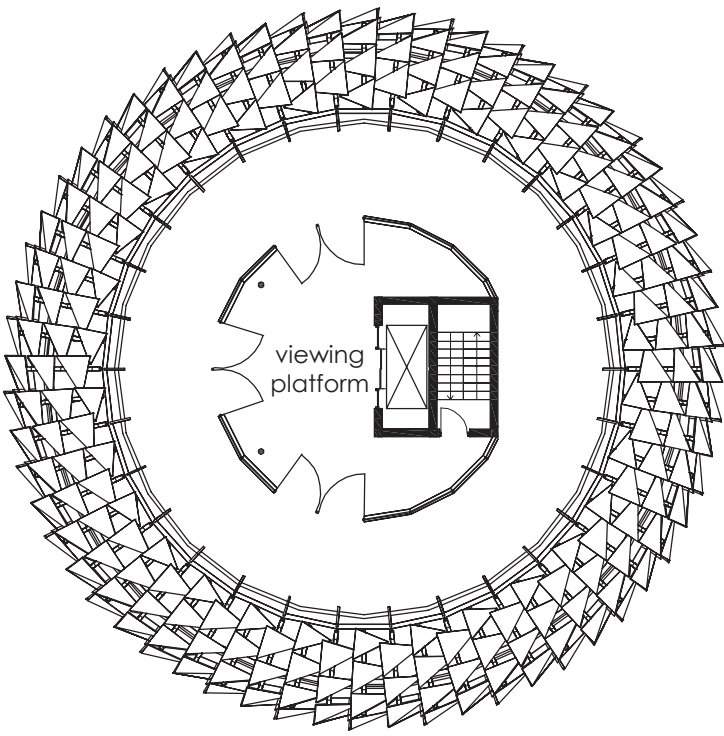


Ground Floor
1:200

First Floor
1:200



Second Floor
1:200



Third Floor
1:200